



DRAGON

PRODUCTS, LTD.

Beaumont, La Porte, Silsbee, Liberty, Victoria, Odessa TX • Lathrop, CA • Akron, IN

500 BARREL CORRUGATED WALL LIQUID STORAGE TANK SPECIFICATIONS

<u>FLOOR:</u>	1/4 PL, 4" V-bottom with integral formed side channels
<u>FLOOR SUPPORT:</u>	10" channel longitudinal runners with formed 1/4 PL crossmembers
<u>WALLS:</u>	1/4 PL solid welded, corrugated steel, corrugations 15" on center
<u>ROOF:</u>	Flat top, 1/4 PL solid welded with channel supports outside
<u>FRONT/REAR:</u>	1/4 PL solid welded, corrugated steel, 10" radius at vertical outside corners
<u>DRAIN/FILL:</u>	4" floor drain at rear end, 3" fill pipe to roof at rear, 4" suction line connection at front to sump, 8" flanged front manifold connection with turn down to floor. 8" exterior manifold with 4 - 4" couplings and plugs, hammer union sub, nut, and cap on ends
<u>GEL LINE:</u>	4" mid high connection on curb side, 4" internal pipe with 3/4" holes located on 12" centers towards floor center, capped on rear end (ends near side manway)
<u>MANWAY:</u>	21" manway on front and side, 2 - non-sealed hatches on roof
<u>PICK UP:</u>	Standard 5th wheel king pin
<u>WELDS:</u>	All welds <u>continuous</u> except substructure crossmembers

MEMEBER OF THE MODERN GROUP/CORPORATE OFFICE
Express Mail: 1655 Louisiana Street, Beaumont Texas 77701
Regular Mail: P.O. Box 790, Beaumont, Texas 77704
(409) 833-2651 USA Toll Free 1-800-231-8198 • Fax (409) 833-3170
email: sales@modernusa.com • web site: www.modernusa.com



DRAGON

PRODUCTS, LTD.

Beaumont, La Porte, Silsbee, Liberty, Victoria, Odessa TX • Lathrop, CA • Akron, IN

AXLE:

**22,500 lb axle with air brakes,
1 1.00X22.5 tires on steel disc wheels**

ACCESS:

22" wide front stairway

FINISH:

**Interior: steel grit blasted to SP10,
lined with 100% solids chemical resistant
epoxy liner, 18 mil DFT minimum, high
voltage spark test inspection
Exterior: steel grit blasted to SP6, color
coated with rust inhibiting polyurethane
paint, 5 mil DFT minimum. Bottom surface
coated with coal tar epoxy**

HYDROTESTING:

Full capacity static test

DIMENSIONS:

**Overall; 45'-8" long, 8'-6" wide, 10' high
500 barrel capacity**

File: eng/accessdoc/pdfspecs/500bbfracofstd09292011

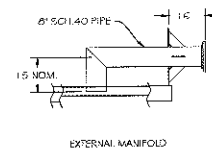
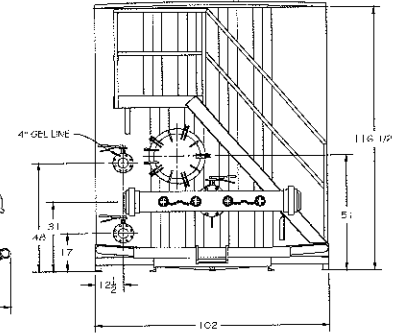
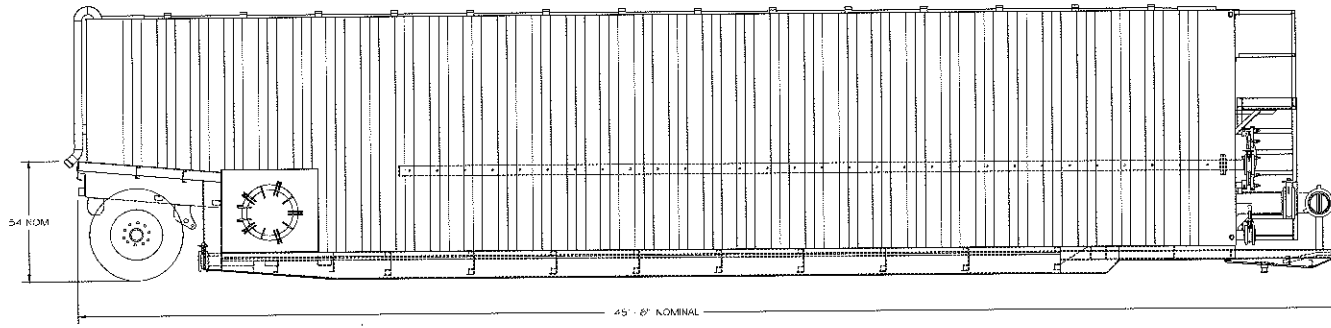
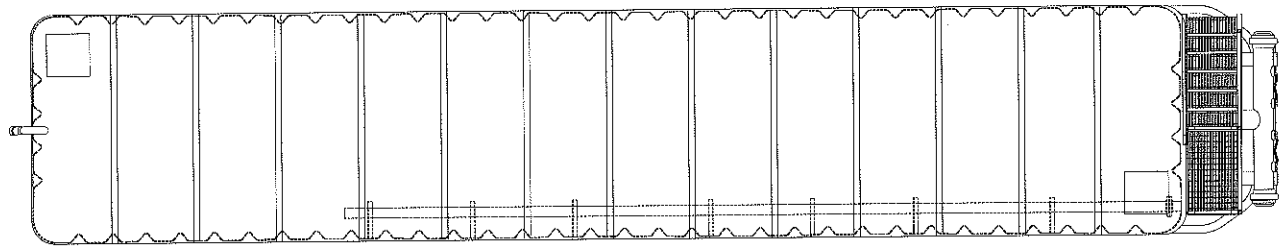
MEMEBER OF THE MODERN GROUP/CORPORATE OFFICE

Express Mail: 1655 Louisiana Street, Beaumont Texas 77701

Regular Mail: P.O. Box 790, Beaumont, Texas 77704

(409) 833-265 | USA Toll Free 1-800-231-8198 • Fax (409) 833-3170

email: sales@modernusa.com • web site: www.modernusa.com



STANDARD FEATURES:

- SIDES: 1/4\"
- FLOOR: 1/4\"
- ROOF: FLAT TOP, 1/4\"
- ALL INTERIOR SURFACES LINED WITH EPOXY COATING
- KICK-IN: 1\"
- HEAVY DUTY NOSE BAR ASSEMBLY
- AXLE: 25,000 LB WITH AIR BRAKES, 11.00 X 22.5
- TIRES ON STEEL DISC WHEELS
- MANWAY: (2) SEALED MANWAYS (SIDE & FRONT)
- 4\"
- 22\"

NOTES:

- SOME DETAILS NOT SHOWN IN ALL VIEWS
- OVERALL DIMENSIONS ARE NOMINAL

 DRAGON PRODUCTS, LTD.		1260		1260-0001E	3
		1260	1260	1260	1260