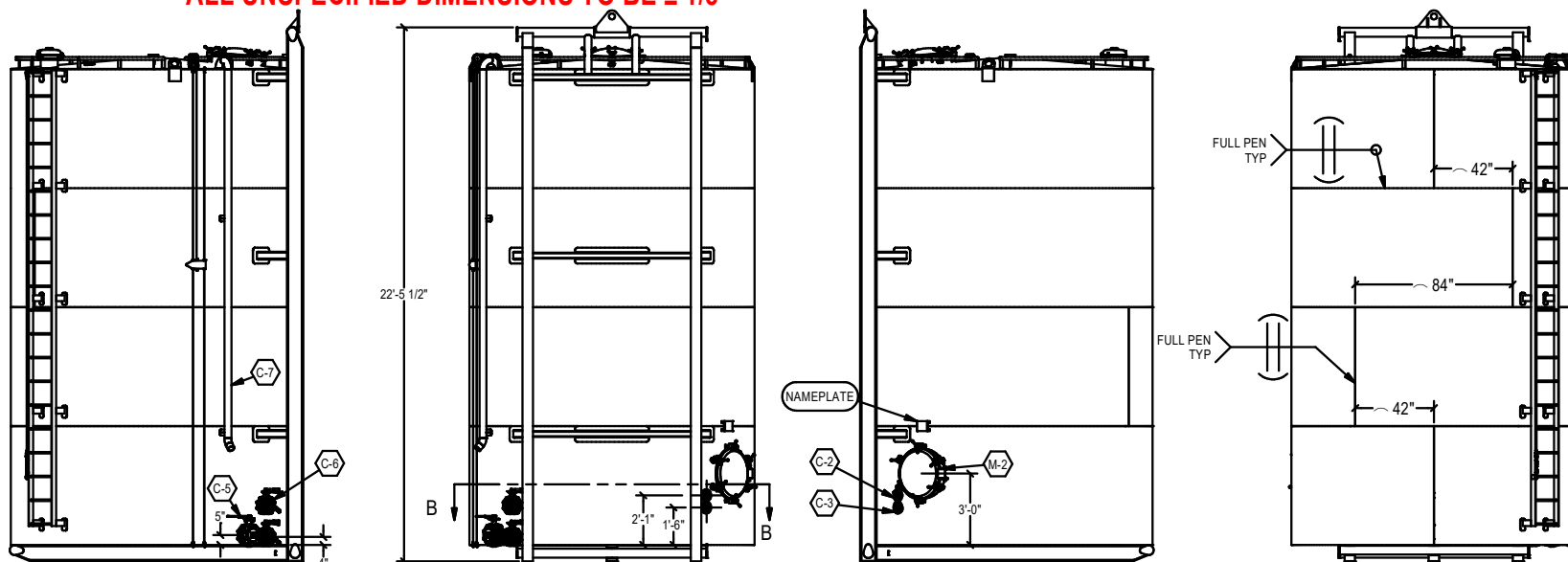



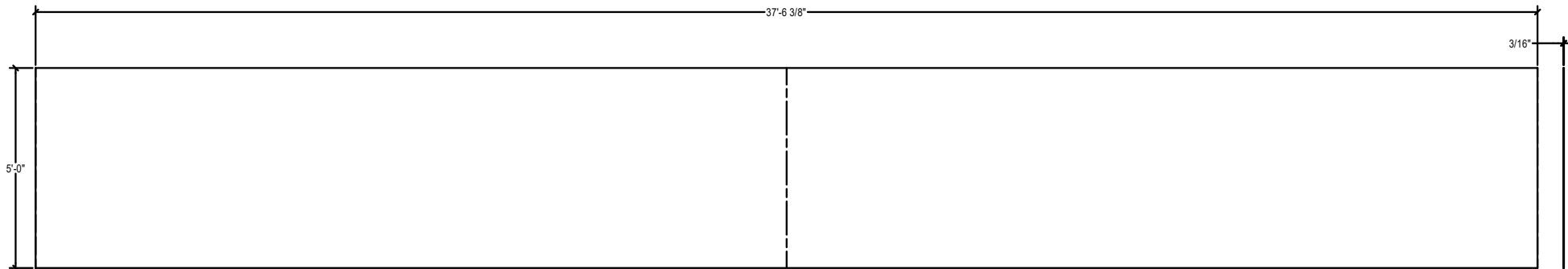
ALL UNSPECIFIED DIMENSIONS TO BE $\pm 1/8$ "



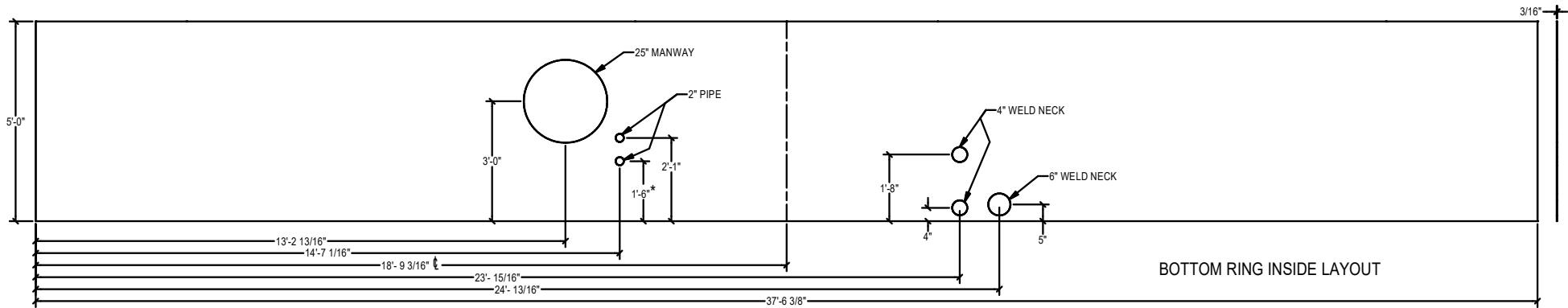
NOTES:
 MATERIALS:
 4.2 PLATES: ASTM A36, A283 (GRADE C OR D) AND OR A285 (GRADE C) OR
 4.3 SHEET: ASTM A1011 (GRADE C OR D)
 4.4 WELDING ELECTRODES: E60 AND E70 CONFORMING TO AWS A 5.18
 4.5 STRUCTURAL SHAPES: ASTM A36
 4.6 PIPING: GRADE A OR B OF THE LATEST EDITION OF API 5L, ASTM A53, OR ASTM A106
 4.7 FLANGES: ASME B16.5
 4.8 COUPLINGS: API 5L, GRADE B OR ASME B16.11
 4.9 BOLTING: ASTM A307 GRADE A OR B
 FLOOR: 1/4" SLOPED FLOOR WITH 1/4" PLATE FLOOR SUPPORTS
 DECK: 1/4" CONE STYLE DECK 1" IN 12" SLOPE
 SHELL: 3/16" SHELL WIDTH 60"
 WELDS: FLOOR, DECK AND SHELL - DOUBLE-WELDED BUTT JOINTS FULL PENETRATION. SHELL TO DECK AND FLOOR - FULL FILLET WELDS INSIDE AND OUT
 CLEANOUT: 25" ROUND - FULL FILLET WELDS INSIDE AND OUT
 CONNECTIONS: AS NOTED - FULL FILLET WELDS INSIDE AND OUTSIDE
 TOW CABLE MUST BE 7/8" LOOPED ENDS 17' LENGTH
 SHACKLE MUST BE 1" CM BOLT TYPE GALV WLL 10 TON
 TESTING: PRESSURE TEST AT 2PSI WHILE SOAP
 TESTING ALL SEAMS, JOINTS, CLEANOUT AND FITTINGS
 SAND BLAST & PAINT AS PER MANUFACTURES SPEC:
 - EXTERIOR: BLAST TO SP6 (COMMERCIAL)
 TOP COAT: CARBOLINE CARBOTHANE 8845
 COLOR: VTI GREY
 MANWAY GASKET: BUNA
 JAYCO THIEF HATCH JT8.1 8ozP/0.4ozV

PARTS/FITTINGS LIST				
ID	QTY	SERVICE	SIZE	TYPE
C-1	1	VENT	4"	MERCHANT HALF COUPLING
C-2	1	HEATER INLET	2"	WELD NECK FLANGE
C-3	1	HEATER OUTLET	2"	WELD NECK FLANGE
C-4	1	FEED LINE	4"	WELD NECK FLANGE, BUTTERFLY VALVE, NPT FLANGE, SQ PLUG WITH CHAIN
C-5	1	FEED LINE	6"	WELD NECK FLANGE, BUTTERFLY VALVE, NPT FLANGE, SQ PLUG WITH CHAIN
C-6	1	FEED LINE	4"	WELD NECK FLANGE, BUTTERFLY VALVE, NPT FLANGE, SQ PLUG WITH CHAIN
C-7	1	DOWNCOMER	3"	THREADED PIPE END
TH-1	1	THIEF HATCH	8"	JAYCO JT8.1
M-1	1	ROUND MANWAY	25"	FABRICATED
M-2	1	ROUND MANWAY	25"	FABRICATED


DRAWN BY ADAM LOEWER		6/15/2023	
CUSTOMER APPROVAL BY		DATE	
UNLESS OTHERWISE SPECIFIED DIMENSIONS ARE IN INCHES. TOLERANCES ON:		<div><p>791 S 9300 W, Ogden, Utah 84414 • (801)-732-5887</p></div>	
FRACTIONS ± 1/8	DECIMALS .XX ± .03 .XXX ± .010	ANGLES ± 1/2°	SIZE B
			DWG NO RLS4 C.A.
			REV A
SCALE		SHEET 1 OF 5	



ALL OTHER RINGS



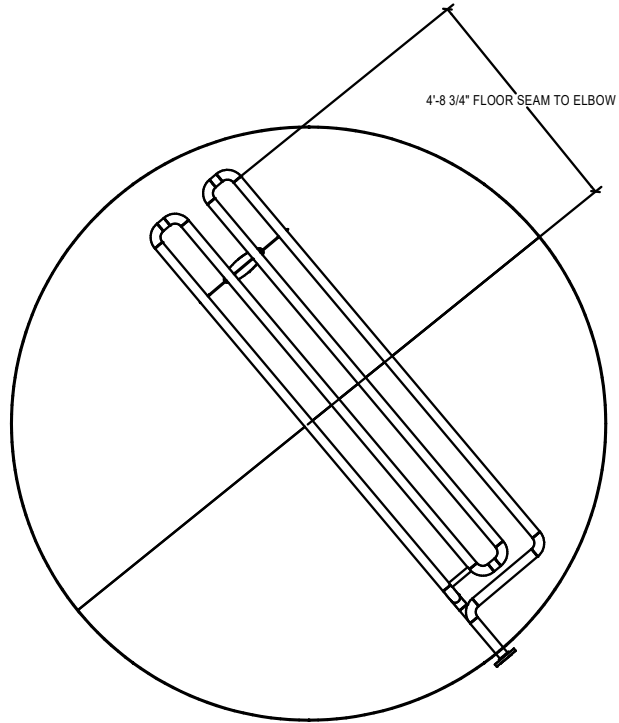
BOTTOM RING INSIDE LAYOUT


DRAWN BY ADAM LOEWER		6/15/2023		 PINNACLE WEST 791 S 9300 W, Ogden, Utah 84414 - (801)-732-5887	
CUSTOMER APPROVAL BY		DATE			
UNLESS OTHERWISE SPECIFIED DIMENSIONS ARE IN INCHES. TOLERANCES ON:				TITLE RING LAYOUT RLS4 C.A.	
FRACTIONS ± 1/8	DECIMALS .XX ± .03 .XXX ± .010	ANGLES ± 1/2°	SIZE B		REV A
SCALE			SHEET 2 OF 5		

U:\Engineering\PRODUCT LINE\VERTICALS\RLS4\221004-M RLS4 MSTR STANDARD\RLS4 C.A..dwg

PROPIETARY AND CONFIDENTIAL THE INFORMATION CONTAINED IN THIS DRAWING IS THE SOLE PROPERTY OF PINNACLE MANUFACTURING. ANY REPRODUCTION IN PART OR AS A WHOLE WITHOUT THE WRITTEN PERMISSION OF PINNACLE IS PROHIBITED.

U:\Engineering\PRODUCT LINE\VERTICALS\RLS4\221004-M RLS4 MSTR STANDARD\RLS4 C.A..dwg
DRAWING #:
DATE:
APPROVED BY:
CASEY
DRAWN BY: A
SHEET REV: A



DRAWN BY ADAM LOEWER		6/15/2023	 791 S 9300 W, Ogden, Utah 84414 - (801)-732-5887			
CUSTOMER APPROVAL BY		DATE				
UNLESS OTHERWISE SPECIFIED DIMENSIONS ARE IN INCHES. TOLERANCES ON: FRACTIONS DECIMALS ANGLES ± 1/8 .XX ± .03 ± 1/2° XXX ± .010			TITLE HEATER			
			RLS4 C.A.			
			SIZE B	DWG NO RLS4 C.A.		REV A
			SCALE		SHEET 3 OF 5	

U:\Engineering\PRODUCT LINE\VERTICALS\RLS4\221004-M RLS4 MSTR STANDARD\RLS4 C.A..dwg

PROPRIETARY AND CONFIDENTIAL THE INFORMATION CONTAINED IN THIS DRAWING IS THE SOLE PROPERTY OF PINNACLE MANUFACTURING. ANY REPRODUCTION IN PART OR AS A WHOLE WITHOUT THE WRITTEN PERMISSION OF PINNACLE IS PROHIBITED.

RLS4 C.A..dwg

DRAWING #:

6/15/2023

DATE:

APPROVED BY:

CASEY

DRAWN BY:

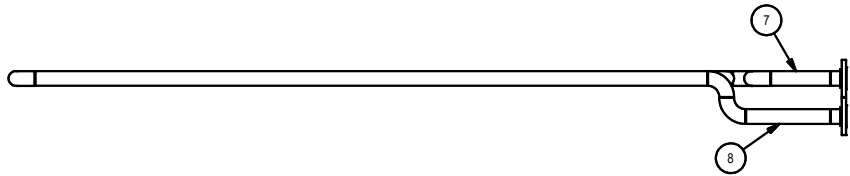
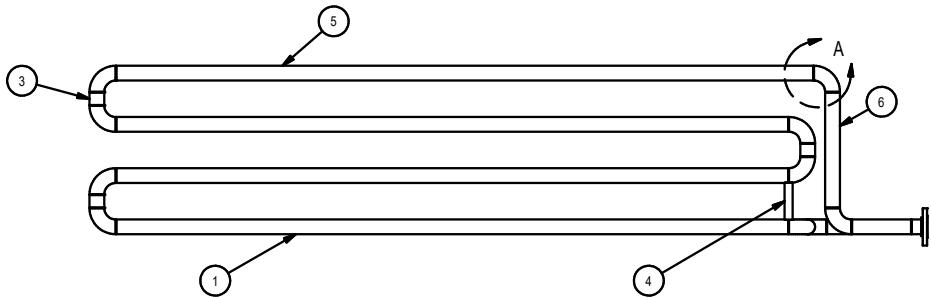
A

SHEET REV:

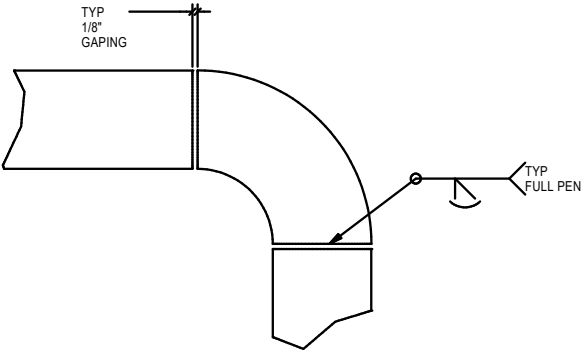
ALL PIPE TO BE A53B SCH 80!!!!



STANDARD READY RESIVOIR HEATER
SUPPORT ASSEMBLY QTY 1 PER TANK



LEAVE OFF WELD
NECK FLANGE
UNTIL FINALS



DETAIL A


CUT CHART PER HEAT COIL			
ITEM	QTY	CUT LENGTH	DESCRIPTION
1	3	108.0000 in	2in A53B SCHED 80
2	10		Buttwelded Fitting - LR 90 Deg Elbow.Inch
3	3	2.0000 in	2in A53B SCHED 80
4	1	6.0000 in	1in A53B SCHED 40
5	1	112.0000 in	2in A53B SCHED 80
6	1	18.5000 in	2in A53B SCHED 80
7	1	9.5000 in	2in A53B SCHED 80
8	1	13.5000 in	2in A53B SCHED 80
10	2	1	Pipe Flanges - Flange Slip - On Welding - Class 150.Inch
11	2	2.375 in	2in A53B SCHED 80

NOTE:
ALL JOINT WELDS ON HEAT COIL MUST BE FULL PEN WITH 1/8" GAPING

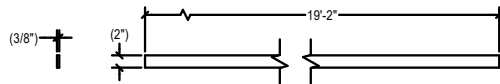
CONTROL STARTS, STOPS AND CRATERS MUST BE FILLED!

PRESSURE TEST TO 175 PSI
ITEM A106B XS -1-6.0 IS A DRAIN PIPE BETWEEN COIL MEMBERS IT CAN
BE WELDED INTO THE ELBOWS ON JOINTS - 2" PIPE

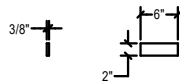
AND OR ELBOWS **MUST HAVE 1"Ø HOLE FOR FLUID TO PASS
BETWEEN COIL MEMBERS**

DRAWN BY ADAM LOEWER		6/15/2023		 PINNACLE WEST 791 S 9300 W, Ogden, Utah 84414 - (801)-732-5887	
CUSTOMER APPROVAL BY		DATE			
UNLESS OTHERWISE SPECIFIED DIMENSIONS ARE IN INCHES. TOLERANCES ON:				TITLE 4 PASS HEATER ASSEMBLY RLS4 C.A.	
				SIZE DWG NO B RLS4 C.A.	
FRACTIONS ± 1/8	DECIMALS .XX ± .03 .XXX ± .010	ANGLES ± 1/2°		SCALE	
				SHEET 4 OF 5	

RLS4 C.A..dwg
DRAWING #:
6/15/2023
DATE:
APPROVED BY:
CASEY
DRAWN BY: A
SHEET REV: A

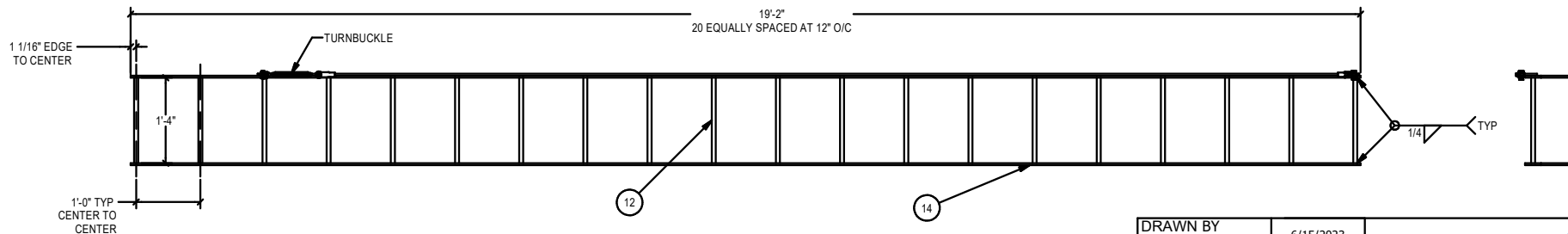
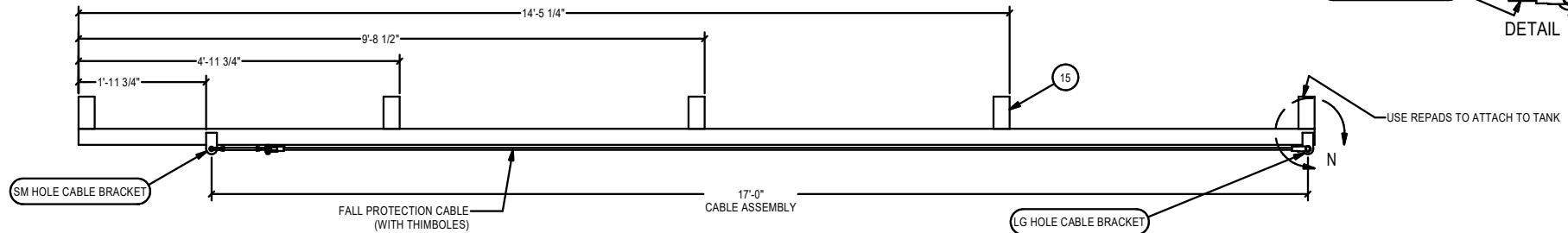
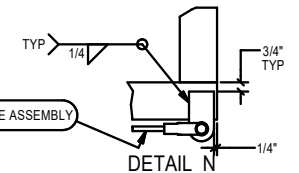



PART NUMBER:	AISC - 2x3/8 - 230	QTY:
MATERIAL:	Steel	2



PART NUMBER:	AISC - 2x3/8 - 8	QTY:
MATERIAL:	Steel	10

CUT CHART PER HEAT COIL			
ITEM	QTY	LEN	DESCRIPTION
LR-03-16	1	16.0000 in	Round Bars
SM HOLE CABLE BRACKET	1	1	LADDER TAB
SAFETY CABLE ASSEMBLY	2	1	
LG HOLE CABLE BRACKET	1	1	LADDER TAB
12	20	16.0000 in	3/4in REBAR
13	1	1	STEP AP203
14	2	230.000 in	Flat Bar Steel
15	10	6.000 in	Flat Bar Steel



DRAWN BY ADAM LOEWER	6/15/2023	 791 S 9300 W, Ogden, Utah 84414 - (801)-732-5887	
CUSTOMER APPROVAL BY	DATE		
UNLESS OTHERWISE SPECIFIED DIMENSIONS ARE IN INCHES. TOLERANCES ON: FRACTIONS DECIMALS ANGLES ± 1/8 .XX ± .03 ± 1/2 .XXX ± .010		TITLE LADDER ASSEMBLY RLS4 C.A.	
		SIZE B	REV A
SCALE		SHEET 5 OF 5	

U:\Engineering\PRODUCT LINE\VERTICALS\RLS4\221004-M RLS4 MSTR STANDARD\RLS4 C.A..dwg

PROPIETARY AND CONFIDENTIAL THE INFORMATION CONTAINED IN THIS DRAWING IS THE SOLE PROPERTY OF PINACLE MANUFACTURING. ANY REPRODUCTION IN PART OR AS A WHOLE WITHOUT THE WRITTEN PERMISSION OF PINACLE IS PROHIBITED.

RLS4 C.A..dwg
DRAWING #:
DATE: 6/15/2023
APPROVED BY:
CASEY
DRAWN BY: A
SHEET REV: A